



Current Anti-Myeloma Chimeric Antigen Receptor-T Cells: Novel Targets and Methods

Ece Vural, Meral Beksac

Clinic of Hematology, Ankara Liv Hospital, Ankara, Türkiye

Multiple myeloma (MM) treatment becomes a major challenge once triple-class or penta-refractoriness develops. Emerging immunotherapies, including bispecific antibodies or chimeric antigen receptor (CAR)-T cell therapy, are promising options for such patients. However, the requirement for specialized expertise and staff under stringent manufacturing conditions results in high costs and restricted production. This article explores the manufacturing and clinical application of CAR T-cells in MM, highlighting their potential, limitations, and strategies to enhance efficacy.

CAR-T can be manufactured by pharmaceutical companies or accredited academic centers authorized to produce and market gene-edited cellular products. This process includes sequential steps: T cell apheresis from the patient, selection of the cells, activation, gene transfer, expansion of the produced cells, cryopreservation, and reinfusion of the cells into a lymphodepleted patient. While CD3+ T cells are typically employed for CAR-T production in clinical studies, studies have demonstrated the potential advantages of specific T cell subgroups, such as naive, central memory, and memory stem cells, in enhancing efficacy. Following T cell harvesting, the subsequent phase involves genetic modification. CAR-T cells are frequently produced by applying viral vectors such as γ -retrovirus or lentivirus. Although viral vectors are commonly used, non-viral methods-including CRISPR/Cas9 and integrative mRNA transfection methods produced by transposons-are also employed. Five different CAR-T cell generations have been developed. The myeloma-

specific targets B-cell maturation antigen (BCMA), signaling lymphocyte activation molecular family 7, and G protein-coupled receptor class C group 5 member D are the most extensively studied in clinical trials. Emerging CAR-T cell targets under investigation include CD138, CD19, kappa light chain, CD56, NY-ESO-1, CD70, TACI, and natural killer G2D. In 2021, idecabtagene vicleucel, a BCMA-targeting agent, became the first CAR-T therapy approved for relapsed/refractory MM, marking a significant milestone in MM treatment. Subsequently, ciltacabtagene autoleucel has also been approved. However, CAR-T resistance is an emerging issue. Resistance mechanisms include T cell exhaustion, antigen escape (loss of BCMA), and tumor microenvironment-related inhibitors. To address these challenges, strategies such as BCMA non-targeted or dual-targeted CAR-T, memory T cells, humanized CAR-T, and rapidly manufactured PHE885 cells have been developed. To enhance specificity, ongoing investigations include bicistronic CAR/co-stimulator receptors, formation of memory-phenotype T cells, combination with immunomodulators or checkpoint inhibitors, armored CAR-T cells, cancer-associated fibroblast inhibitors, and CAR approaches that inhibit exhaustion signals.

In conclusion, studies are exploring the use of CAR-T at an earlier stage, including at diagnosis, with an aim to replace ASCT. CAR-T has introduced a new dimension to MM treatment; however, limited efficacy in high-risk MM and the emergence of resistance to CAR-T remain key challenges to be addressed.

INTRODUCTION

Immunomodulatory drugs, proteasome inhibitors, and anti-CD38 antibodies have significantly increased the depth and duration of response in multiple myeloma (MM) patients, contributing to long-term clinical success.¹ Patients exhibiting unfavorable genetic features, those categorized as high risk according to R-ISS, and those with extramedullary diseases may demonstrate inadequate

responses to the best available treatments.² Thus, patients with triple-class (TCR) and penta-refractory represent a significant therapeutic challenge.³ For such patients, treatment options include alkylating agent-based chemotherapy; bispecific antibodies or antibody-drug conjugates targeting B-cell maturation antigen (BCMA), FcRH5R, G protein-coupled receptor class C group 5 member D (GPC5D); the nuclear export receptor, exportin 1 inhibitors; signaling lymphocyte activation molecular family 7 (SLAMF7) inhibitors; and the selective



Corresponding author: Meral Beksac, Clinic of Hematology, Ankara Liv Hospital, Ankara, Türkiye

e-mail: mbeksac56@gmail.com

Received: April 08, 2025 **Accepted:** May 15, 2025 **Available Online Date:** 01.07.2025 • **DOI:** 10.4274/balkanmedj.galenos.2025.2025-4-25

Available at www.balkanmedicaljournal.org

ORCID iDs of the authors: E.V. 0000-0002-2754-8995; M.B. 0000-0003-1797-8657.

Cite this article as: Vural E, Beksac M. Current Anti-Myeloma Chimeric Antigen Receptor-T Cells: Novel Targets and Methods. *Balkan Med J.*; 2025; 42(4):301-10.

Copyright@Author(s) - Available online at <http://balkanmedicaljournal.org/>

BCL-2 inhibitor venetoclax, particularly in patients with t(11;14) positivity.⁴ For TCR patients, chimeric antigen receptor (CAR)-T therapy administered prior to bispecific antibodies is emerging as a promising therapy.

CAR-T therapy is an advanced immunotherapeutic approach that has exhibited efficacy in heavily pre-treated MM patients, similar to its success in other hematological malignancies in recent years. This treatment's core principle involves genetically modifying T lymphocyte-harvested from either affected or third-party healthy individuals-to express CAR, enabling them to recognize myeloma-specific receptors on tumor surfaces. CAR-T cells carry out the tumor recognition process independently of major histocompatibility antigen. Ideally, targeting antigens that are exclusively expressed on myeloma cells-and not on healthy cells-ensures tumor-specific treatment.⁵ However, this treatment method's widespread adoption is being restricted by its high price, preparation time, and demand for skilled staff. This article will review the production and practical applications of CAR-T therapy, from its inception to current medical practice.

THE MANUFACTURING PROCESS OF CAR-T THERAPY

Overview

Although CAR fusion protein was first created in 1989 at the Weizmann Institute of Health⁶, its application in myeloma did not emerge until 2015. CAR-T cells targeting CD19 were administered 12 days after autologous stem cell transplantation with a melphalan conditioning regimen, aiming to delay or prevent relapse in patients previously treated with multiple therapy lines.⁷ Subsequent identification of myeloma-specific antigens beyond CD19 has expanded the range of targets available for CAR-T cell therapy. These antigens are illustrated in adapted Figure 1.⁸ In this section we will outline the technical aspects of CAR-T manufacturing with a focus on current progress to overcome the drawbacks of CAR-T therapy in general.

CAR-T MANUFACTURING

CAR-T can be manufactured either by pharmaceutical companies or by academic centers authorized to produce and *distribute* gene-edited cellular products under "good manufacturing practice" conditions. These two approaches have been developing in parallel on a global scale. This process includes the sequential steps of T cell apheresis from the patient, selection of the cells, activation, gene transfer, expansion of the produced cells, cryopreservation, and reinfusion of the cells into the patient who has undergone lymphodepletion.⁹ Selecting the relevant T cells from the appropriate patient, transporting them to the laboratory, and producing CAR-T cells under optimal conditions and as rapidly as feasible require significant expenditures, trained personnel, and advanced laboratories. In this section of the article, the steps of CAR-T production and the emerging manufacturing technologies developed to overcome the barriers to effective production will be discussed.

CAR-T therapy comprises the following steps sequentially after one of the target antigens is identified. The first step involves T cell collection from the patient using leukapheresis. In addition, allogeneic CAR-T approaches are also available and will also be addressed in this article. Selecting the appropriate mature T cell subset is a critical step in CAR-T cell production.¹⁰ Although CD3+ T cells are generally selected for CAR-T production in clinical studies, studies have demonstrated that subsets such as naïve, central memory, and memory stem T cells may offer superior efficacy.⁹ The success of an adequate and effective T cell collection procedure depends on multiple factors. Leukapheresis failure occurs in approximately 7-8% of patients.¹¹ For example, it is crucial to ascertain the date of administration of the most recent cycle of chemotherapy and immunotherapy before the collection procedure. Factors influencing leukapheresis include the patient's performance status, disease characteristics and burden, CD3+ lymphocyte count, type of venous access, and the quality of cryopreserving and transfer conditions.¹²

Following T cell harvesting, the subsequent phase involves genetic modification. CAR-T cells are commonly manufactured by applying viral vectors such as γ -retrovirus or lentivirus.¹³ The initial vector used is the γ -retroviral vector. A steady level of CAR expression is provided by the high gene transfer efficiency. This method has been employed in many studies and is considered safe and effective.^{9,14} Lentiviral vectors are comparable to retroviral vectors in several aspects. However, the absence of a stable vector packaging system in lentiviruses remains a significant barrier to their production.¹⁵ Although viral vectors are frequently used, non-viral approaches-including CRISPR/Cas9 and transposon-based integrative mRNA transfection methods-are also being employed. These non-viral methods have a larger cargo and clonality capacity.¹⁶ There are also *ex vivo* expansion facilities. The process typically takes 1-2 weeks from the harvesting time.¹⁷ Clinical trials employing non-viral vectors include insertion strategies such as BCMA-targeting PiggyBac [P-BCMA-ALLO1(NCT04960579)] and SLAMF7-targeting Sleeping Beauty (CARAMBA trial).

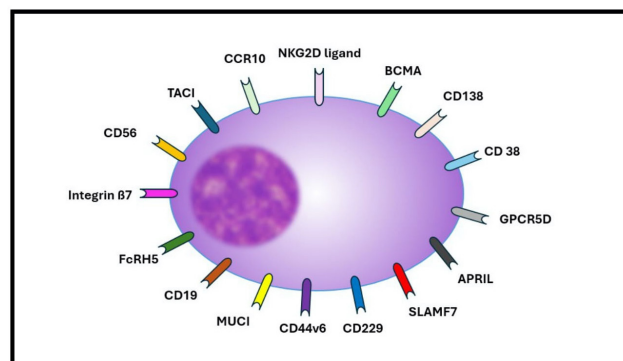


FIG. 1. Myeloma specific targets on plasma cells.⁸

NK, natural killer; BCMA, B-cell maturation antigen; GPCR5D, G protein-coupled receptor class C group 5 member D; SLAMF7, signaling lymphocyte activation molecular family 7.

The manufactured CAR cells consist of three components: extracellular, transmembrane, and intracellular domains.¹⁸ The extracellular domain can interact with the intracellular domain via the transmembrane domain; this connection is vital for cancer cell eradication. The extracellular domain contains a single-chain variable fragment (scFV). This fragment is a fusion protein comprising the variable regions of an antibody, enabling the CAR-T cell to bind to the specialized target cell. Through its primary and secondary costimulatory domains, the intracellular domain—which contains immunoreceptor tyrosine activation motifs, or ITAMs—contributes to T cell activation.¹⁹ The targeted myeloma antigen activates signal production using the intracellular domain of CD3 ζ .²⁰ Five distinct generations of CAR-T cells have been created thus far, and each new generation has brought new regulations. The comparison of these five generations of CAR-T cells is illustrated in Figure 2.²¹ All five generations of CAR-T cells share the common characteristic of incorporating the CD3 ζ domain within their intracellular regions. The first generation only has the CD3 ζ domain with a lack of cell expansion capability. In the second generation, there exists a costimulatory domain; those incorporating 4-1BB resemble memory stem cells and exhibit enhanced persistence. Entities exhibiting CD28 have enhanced endurance as well as augmented growth ability. Other domains, such as ICOS or OX40, might exist. The most widely approved CAR-T therapies, called idecel and cilta-cel, belong to the second-generation CARs.^{22,23} The third-generation CAR-T cells have been optimized for enhanced efficacy and prolonged persistence. Fourth-generation CAR-T cells, known as TRUCKs (T cells Redirected for Universal Cytokine-mediated Killing), and fifth-generation constructs are engineered to secrete immunomodulatory cytokines such as interleukin (IL)-12 and include IL-2R β domains that activate the JAK/STAT3 signaling pathway.^{20,24,25} The aim of all these modifications is to establish an immune synapse with the tumor cell, resulting in cytotoxicity, apoptosis, and cytokine production.²⁶ Upon chemotherapy-induced lymphodepletion, reinfusion of CAR-T cells is performed.

CAR-T PRODUCTS CURRENTLY APPROVED FOR TREATMENT OF MULTIPLE MYELOMA

Overview

The CAR-T products to be utilized are defined by the myeloma-specific antigens, as shown in Figure 1. Among these targets, BCMA, SLAMF7, and GPRC5D are the most extensively studied in clinical studies. Emerging CAR-T cell targets under development include CD138, CD19, kappa light chain, CD56, NY-ESO-1, CD70, TACI, and NKG2D. Currently, the Food and Drug Administration (FDA) has approved six CAR-T cell treatments for hematological malignancies, including MM, leukemia, and lymphoma: axicabtagene ciloleucel (CD19), brexucabtagene autoleucel (CD19), ciltacabtagene autoleucel (BCMA), idecabtagene vicleucel (BCMA), lisocabtagene maraleucel (CD19), and tisagenleucel (CD19).²⁷ In 2021, idecabtagene vicleucel was the first CAR-T therapy to be approved for relapsed refractory MM (RRMM), a significant milestone in MM treatment. This was followed by the approval for cilta-cel in 2022, further expanding the therapeutic armamentarium for MM.

BCMA DIRECTED CAR-T PRODUCTS

BCMA is a member of the tumor necrosis factor receptor superfamily 17 (TNFRSF 17) or CD269 and is exclusively expressed on mature B lymphocytes necessary for the survival of plasmablasts and plasma cells. BCMA causes the expansion of plasma cells through interaction with B-cell activating factor and a proliferation-inducing ligand (APRIL).²⁹ BCMA expression is absent in hematopoietic stem cells.³⁰ Thus, it is a biomarker for MM that can be identified using flow cytometry or ELISA. Both expression and soluble levels of BCMA carry prognostic significance.³¹

The first CAR-T cell targeting BCMA, incorporating a murine scFV and a CD28 co-stimulatory domain, was evaluated in a trial conducted in 24 RRMM patients.^{32,33} In the first of the KarMMa studies, idecabtagene vicleucel employed a CAR construct containing both a murine scFv and a 4-1BB costimulatory domain. KarMMa-1 was

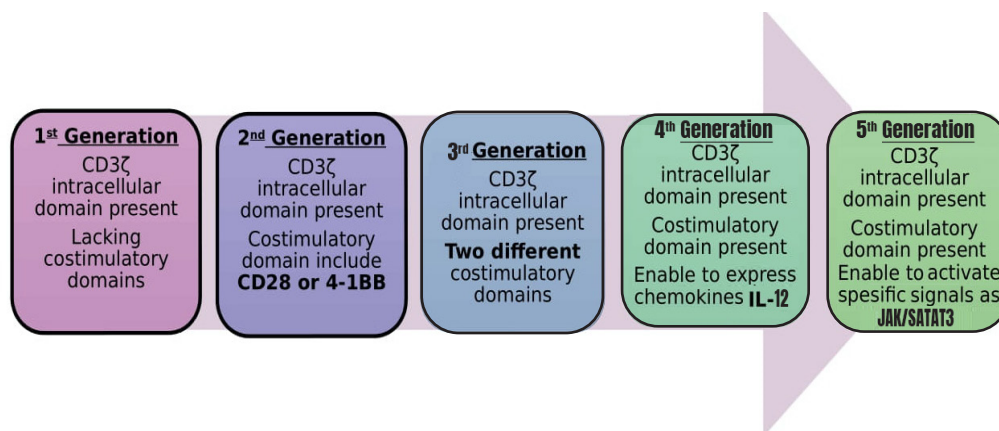


FIG. 2. The Features of five generations of CAR-T cells.

CAR-T, chimeric antigen receptor-T; CRISPR, clustered regularly interspaced short palindromic repeats; FAP, fibroblast activation protein; iPSC, induced pluripotent stem cell; NK, natural killer; Tscm, T-stem cell memory; TRUCK, T cell redirected for universal cytokine-mediated killing.

conducted in 128 RRMM patients receiving at least three previous regimens, demonstrating an ORR of 81% and a CR rate of 39%.³⁴ The FDA authorized the medication for RRMM in 2021 based on the study's findings. In the KarMMA-2 trial there were several cohorts, and cohort 2a included early relapsed patients.³⁵ After these phase 2 trials, the KarMMA-3 trial investigated the efficacy of ide-cel compared to standard of care treatments.³⁶ The phase 1 KarMMA-4 study, which includes newly diagnosed MM (NDMM) patients, has finished accrual but has not yet published results yet.³⁷

In another BCMA-targeted CAR-T study, CARTITUDE-1, the efficacy of ciltacabtagene autoleucel was examined. Here, 97 RRMM patients were included. The ORR was 98%, and the stringent CR response was reported as 98%. The CARTITUDE-2 cohort A³⁸ and CARTITUDE-4³⁹ research included patients who had received 1-3 lines of treatment, in contrast to the earlier studies. The results of the subsequent CARTITUDE-2⁴⁰ and CARTITUDE-4³⁹ studies resulted in the approval of cilta-cel in 2022. The ongoing phase 3 CARTITUDE-5 and CARTITUDE-6 studies are designed for NDMM patients.⁴¹

There are still many ongoing clinical trials beyond those currently approved by the FDA. For example, LCAR-B38M is an anti-BCMA CAR-T cell developed in China, characterized by high specificity. It includes two camelids and demonstrates high affinity for BCMA. In the LEGEND-2 study, its efficacy was investigated in 57 RRMM patients, and an ORR of 88% and a CR rate of 74% were reported.⁴²

To enhance access to CART, universal CAR-T (UCAR-T) and CAR-T $\gamma\delta$ cells have been introduced as alternatives to autologous CAR-T cells, which require 3-4 weeks for manufacturing. Although obtaining these cells from a healthy donor reduces the risk of tumor contamination, these allogeneic cells carry a potential to induce graft-versus-host disease, which may be mitigated through CD52 gene manipulation.⁴³ The list of anti-BCMA targeting products is presented in Table 1.^{23,42,44-69}

RESISTANCE TO CELLULAR IMMUNOTHERAPY IN MM

Overview

Despite yielding profound responses even among TCR MM patients with CAR-T, disease relapses still occur. There are various factors that impede the success of CAR-T therapy. Among factors impacting treatment success, patient-related factors (i.e. cachexia, cytopenia, gut microbiota disrupted by antibiotics), disease-related factors, and the host's immune system play pivotal roles. Intensive treatments prior to CAR-T can exacerbate these factors.⁷⁰ In addition, there may be factors connected to the CAR-T product. The quality and function of T lymphocytes might be influenced by prior therapies; hence, it is imperative to confirm that the patient has not received intensive treatments, including steroids, immunosuppressive drugs, or chemotherapy, prior to the T cell harvesting to minimize T cell exhaustion.⁷¹ The CD4/CD8 ratio has been demonstrated to predict T cell fitness. Consequently, several studies considered conforming to a CD4/CD8 ratio of 1:1.⁷²

Additional contributing factors to CAR-T therapy failure include the tumor's inability to release adequate antigens (antigen escape, BCMA loss)⁷³, the failure of trogocytosis (the lymphocyte killing by the tumor through contact at the tumor cell surface)⁷⁴, and the inadequate persistence of CAR-T cells or exhaustion. Also, tumor

milieu can hinder the optimal functioning of CAR-T cells through the production of inhibitory immune checkpoint inhibitors or immunosuppressive cytokines.⁷⁵ To overcome resistance, such as antigen escape, strategies include the use of dual- or multi-targeted CAR-T products. To reduce CAR-T cell exhaustion and enhance persistence, approaches such as incorporating memory T cells, optimizing intracellular signaling domains, and developing armored CAR-T cells to counter the immunosuppressive tumor microenvironment have been explored.⁸ Other targets except BCMA and dual targets are presented in Table 1. Beyond its current approval for RRMM, CAR-T therapy is also being investigated as a first-line treatment for high-risk patients whose T cells have not been exhausted by previous treatments. Conversely, while immunotherapies or ASCT given may serve as bridging therapies to increase efficacy, it would be prudent to avoid using anti-BCMA bispecific treatments as a bridge here, as they may downregulate antigen expression and contribute to T cell exhaustion.⁷⁶ Nevertheless, considering that patients with a high tumor burden have a high risk of relapse, bridging therapies are essential.

One way to overcome the barrier against optimal autologous T cell harvesting could be obtaining allogeneic CAR-T. Since this product is obtained from a completely healthy individual, it mitigates the likelihood of T cell exhaustion or contamination with a tumor. For example, in a study, T cells obtained from a patient with monoclonal gammopathy of uncertain significance were demonstrated to be more immunologically active compared to those obtained from symptomatic MM patients.⁷⁷ In addition, CAR-natural killer (NK) could serve as an alternative for patients refractory to CAR-T therapy. NK cells exhibit a different cytokine profile compared to T cells, and the risk of cytokine release syndrome is lower with these products. In this context, the CAR construct is designed to address the relatively limited persistence of NK cells.⁷⁸

For individuals who do not benefit from CART cellular immunotherapy, new approaches are still required in spite of all these coping mechanisms. It has been demonstrated that the combination of CAR-T therapy with previously ineffective anti-BCMA bispecifics provides 15-18 months of OS advantages.^{79,80} The relatively decreased success rate of CAR-T therapy among patients who had previously received belantamab mafodotin or bispecifics mandates temporal sequencing of targets and effectors.⁸¹

During CAR-T cell production, safety, purity, potency, identity, and persistence play crucial roles. To optimize all these features, novel CAR-T technologies are being developed. These include dual-targeted therapies, bicistronic CAR, tandem CAR utilizing two scFV constructs, and ligand-based CAR technologies designed to boost efficacy. In addition, to enhance efficacy or suppress the inhibitory microenvironment, combining CAR-T therapy with various drugs or ASCT and adding proteasome inhibitors and gamma secretase inhibitors have also been explored by clinical research. To improve specificity, there are approaches such as the use of bicistronic CAR/co-stimulator receptors, induction of memory-phenotype T cells, combination with immunomodulators or checkpoint inhibitors, armored CAR-T cells, cancer-associated fibroblast inhibitors, and CAR designs that block exhaustion signals. Moreover, the application of non-viral transfections, such as the CRISPR-Cas9 technique, is under investigation.²¹

TABLE 1. The List of Anti-BCMA and Non-BCMA and Dual CAR-T Cell Products.

Anti-BCMA			Other targets	Dual targets
Standard	Humanized	Novel		
Murine scFV (11D5-3) CD28 co-stim. domain Retroviral vector	KITE-583 Human anti-BCMA scFV CD28 costimulatory domain	P-BCMA 101 Non-viral piggyBac DNA mod system using transposons and rimiducid ⁴³	CTL019 (Tisa-cel, Kymriah, Novartis) CD19 scFV (FMC63) 4-1BB co-stimulatory domain Lentiviral vector	BCMA/CD38 Bispecific CAR-T cells Lentiviral vector
CRB (bb2121/Ide-cel) 4-1BB co-stim. Domain Lentiviral vector	PHE885 T-charge platform Enables <i>in vivo</i> CAR-T expansion and manufacture < 2 days Human anti-BCMA scFV 4-1BB co-stimulatory domain Lentiviral vector	ALLO-715 Second gen scFV with TALEN knockout of T cell receptor alpha constant and CD52 with rituximab safety switch ⁴⁰	MCARH109 GPRC5D scFV Lentiviral vector	BCMA/CD38 Hela cells
JNJ-4528 (Cilta-cel) 2 camelid variable heavy chain domains 4-1BB co-stimulatory domain Lentiviral vector	MCARH171 Human scFV 4-1BB co-stimulatory domain tEGFR safety switch Lentiviral vector	ddBCMA Anitocabtagene Autoleucel Synthetic antigen-binding domain with reduced immunogenicity and improved CAR stability ⁵²	AUTO2 Truncated form of APRIL Recognizes BCMA and TACI OX40 co-stimulatory domain Gamma retroviral vector RQR8 safety switch	Combined humanized anti-BCMA and anti-CD38 CAR-T cell
CRB402 (bb21217) Murine scFV (11D5-3) 4-1BB Phosphoinositide 3 kinase inhibitor added to enrich memory-like T cells Lentiviral vector	JCARH125 (Orva-cel) Human scFV 4-1BB co-stimulatory domain Lentiviral vector	BRD015 Murine BCMA ScFv, CD3 ζ , and CD28 domains derived from mice Lentiviral vector (ChiCTR-OPC-16009113)	Human NKG2D Gamma retroviral	Combined humanized anti-BCMA and anti-CD19 CAR-T cells
LCAR-B38M 2 camelid variable heavy chain only domains 4-1BB co-stimulatory domain Lentiviral vector	CT103A Human scFV 4-1BB co-stimulatory domain Lentiviral vector	DESCARTES-08 CD8+ CAR T anti BCMA mRNA transfection (NCT03448978)	CAR2 Anti-CD38 A2 CAR-T (NCT03464916)	Combined humanized anti-BCMA and anti-CD19 CAR-T cells Lentiviral vector
	FHVH33-CD8BBZ Human heavy chain variable domain (FHVH33) 4-1BB co-stimulatory domain Gamma retroviral vector		ATLCAR Anti-CD138 CAR-T (NCT03672318)	Combined anti-BCMA and anti-CD19 FasTCAR-T Cells (GC012F)
	CT053 (Zevor-cel) Human scFV (25C2) 4-1BB co-stimulatory domain Lentiviral vector		Sleeping Beauty gene transfer SLAMF7 (NCT03958656)	Combined humanized anti-BCMA and anti-CD19 CAR-T cells (huCART19)

TABLE 1. continued

Anti-BCMA	Other targets	Dual targets
CT103A (median persistence: 307.5 days) (ChiCTR1800018137)	CD138-CAR-T Indatuximab scFv of anti-CD138 antibody linked to 41BB and CD3 ζ Lentiviral vector Kappa- CAR-T (NCT00881920) scFv of anti- κ light chain antibody linked to CD28 Lentiviral vector NY-ESO-1-CAR T scFv of anti-NY-ESO-1 antibody linked to 4-1BB and CD3 ζ s Lentiviral vector CD56-CAR T (NCT03473496 and NCT03271632) CD70-CAR T scFv (XW-208) of anti-CD70 antibody linked to CD3 ζ subunit Lentiviral vector Anti-TACI CAR-T (CB-P24) h(CD28-CD3 ζ) Lentiviral vector	BCMA/CS1 (7A8D5 clone) Bispecific CAR-T cells

CAR-T, chimeric antigen receptor-T; BCMA, B-cell maturation antigen; GPRC5D, G protein-coupled receptor class C group 5 member D; scFv, single-chain variable fragmen.

To improve persistence, completely humanized (CT053, CT103A) or synthetic (CART-ddBCMA) constructs have been introduced.^{60,82,83} Furthermore, CAR-T cells characterized by central memory and/or stem cell memory phenotypes (nbb21217, P-BCMA-101, MCAH171, and JCARH125/orva-cel) with superior persistence capacity have been developed (23,46,57). The most recent CAR-T cell strategies (GC012F, PHE885, and CC-98633) feature rapid manufacturing timelines, allowing more patients to gain access to CAR-T therapy.^{63,84,85} PHE885 is rapidly manufactured (< 2 days) and permits *in vivo* T-cell expansion.⁴⁸ Combination therapies play a key role in enhancing T cell activity. Some of CAR-T efficacy improvement methods are illustrated in the adapted Figure 3⁶², and the novel manufacturing CAR-T technologies are displayed in adapted Table 2.^{27,86}

NON-BCMA CAR-T INVESTIGATIONAL PRODUCTS

An alternative to BCMA depletion or resistance is non-BCMA focused immunotherapies. Figure 1 illustrates the novel CAR-T cell therapies targeting several antigens. Mechanisms of CAR-T efficacy enhancement are illustrated in Figure 2, CAR-T therapies employ dual antigen targeting, allogeneic sources, and CRISPR-Cas9

technologies and exhibit significant potential. While clinical trials targeting CD138, CD38, CD19, CD56, CD70, kappa, GPRC5D, SLAMF7, and integrin β ^{749,55,59,61} (NCT03778346) have been initiated, many of these treatments are still in the preclinical research stage. In this section of the article, all these multifaceted targets will be covered in detail.

CD19, a surface antigen expressed on mature B cells, serves as a key therapeutic target in several B cell malignancies. Although CD19 is lacking in most myeloma cells, a minor subset may continue to express this antigen. The CTL019 study evaluated the efficacy of combining CTL019 with standard myeloma therapy in a cohort of twelve patients. This trial involved ASCT administration in conjunction with CAR-T therapy, utilizing a high-dose melphalan conditioning regimen in addition to the induction therapy. In this study, progression-free survival improved significantly.⁸⁷

Alternatively, there are investigations focusing on CD56, an antigen that is frequently expressed on myeloma cells. Given that both central and peripheral nervous system cells may express CD56, neurological toxicities are concerning.⁸⁸ The study investigating the efficacy of anti-CD56 was discontinued (NCT03473496).

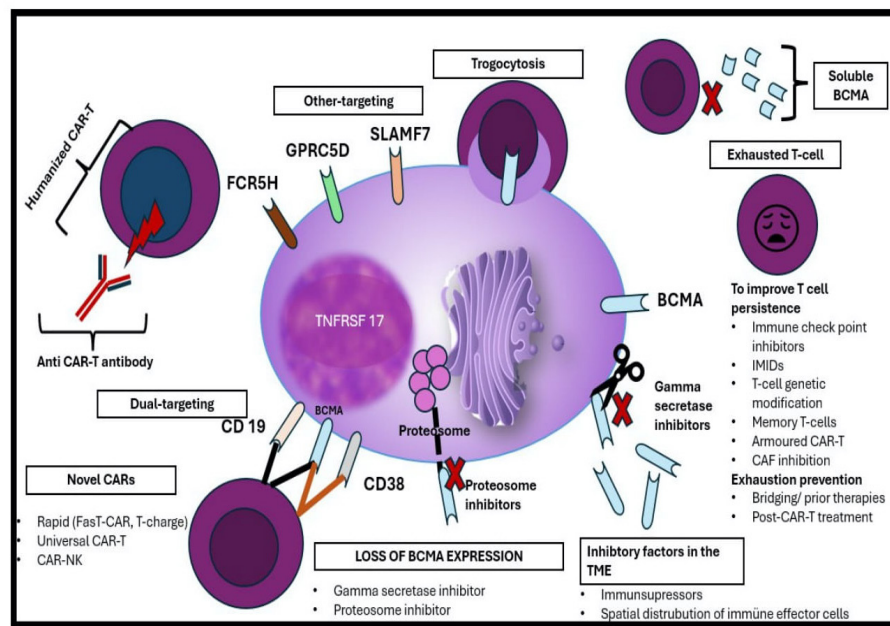


FIG. 3. The Improvement of CAR-T Efficacy.

CAF, cancer associated fibroblast; TME, tumor microenvironment; CAR-T, chimeric antigen receptor-T.

BMS-936561 and SGN-75 are drugs designed to target CD70, another anti-myeloma target. Although it appears to be effective and safe, the insufficient CD70 expression on myeloma cells is seen as an obstacle to the widespread adoption of the treatment.⁶⁸

In this context, CD138, which is expressed on several myeloma cells, may be a more rational therapeutic target. CD138 is a member of the syndecan family of heparan sulfate proteoglycans. It is widely acknowledged to be overexpressed, particularly in refractory disease.⁶⁹ Apart from the generation of anti-CD138 CAR-T cells, research is being conducted to evaluate the combination of anti-CD138 medications [BT062 (indatuximab)].⁹⁰

Today, the CD319 molecule, known as SLAMF, also plays a key role in phagocytosis and is frequently expressed by immune cells. The anti-SLAMF7 medication elotuzumab is already authorized as an anti-myeloma medication.⁹¹ In ongoing clinical trials, it has been demonstrated that SLAMF7 CAR-T cells contain scFV, memory-enhanced T cells, and the truncated EGFR molecule (NCT03710421). The lack of specificity of this target to myeloma cells not only reduces efficacy but also leads to side effects. CAR-T cells may not achieve the desired level of disease control in all patients.⁹²

Another target is the transmembrane activator and CAML interactor (TACI), a member of the TNFRSF13B superfamily. A proliferation inducing ligand (APRIL) and B cell activating factor are key drivers of myelomagenesis, and research indicates that CAR-T cells targeting APRIL can also influence BCMA and TACI signaling. TACI is expressed on both myeloma cells and regulatory T cells.

Consequently, cytotoxicity may manifest with greater intensity.⁹³ A study demonstrated the effectiveness of second-generation CAR-T cells targeting TACI.⁶⁹ NY-ESO-1-CAR-T cells also appear promising in cancers that express this molecule. It has played a significant role in both enhancing tumor cytotoxicity and in the persistence of memory CAR-T cells. One of the adverse outcomes, monocytopenia, is largely curable. It is also believed to reduce CRS. Its main limitation is its non-specificity toward myeloma cells.^{94,95}

Immunotherapy may target light chains secreted by myeloma cells as a therapeutic strategy. To investigate this, a phase 1 study on kappa-positive RR lymphomas and myeloma was conducted. In this study, all prior treatments were discontinued at least four weeks before CAR-T cell infusion in the cohort of 16 patients. Although the authors correlate treatment response with light chain production in myeloma cells, further research is required.⁹⁶ Additional target-based products are also presented in Table 2.

In addition to single antigen-targeted therapies, dual-targeted therapies have also shown promise. This strategy can be implemented either by targeting two distinct antigens or by employing a single CAR-T cell or two separate CAR-Ts-expressing different scFVs simultaneously, as in tandem CAR-T constructs.⁹⁷ The extracellular domain of third-generation CAR-T cells includes both anti-BCMA and anti-CD19 scFV. Ongoing studies are investigating BCMA/CD38, BCMA/CS1 bispecific cells, anti-BCMA with anti-CD38, or anti-CD19/FasTCAR T combined therapies-either administered concurrently or after ASCT-as presented in Table 1.

CAR-T therapies are currently being used as a successful advance in MM treatment, demonstrating efficacy in heavily pretreated, high-risk, and early-relapsing patients. Currently, studies are being

TABLE 2. The Novel Manufacturing CAR-T Technologies.

The novel CAR-T technologies

The fifth-generation CARs
Multiantigen CARs with “OR” logic gate
Pooled CAR-T cells
Universal CARs
On-switch CARs
Off-switch CARs
Suicide gene
Suicide receptor (antibody-mediated depletion)
CAR-T cells with tumor-associated chemokine receptors
FAP-specific CARs
Modify CAR-T cells to express heparinase by gene editing
Dual CARs with “NOT” logic gate: inhibitory CARs (iCARs)
Dual CARs with “AND” logic gate: synNotch receptor system
Dual CARs with “AND” logic gate: split CARs (Combination CARs)
Armoured CAR-T cells
The fourth-generation CARs (TRUCKS)
mRNA transfections
CRISPR-Cas9/Cas12a technique (allogeneic)
ARCUS (allogeneic)
TALEN (allogeneic)
Memory-like T PI3K inhibitor
Earlier employment
Transposon Tscm, Cas-CLOVER, allogeneic
ShRNA/hairpin, allogeneic
Combination therapies
Artificial antigen-presenting cells (AAPCs)
Bi-specific T cell engagers (BiTEs)
Hematopoietic stem cell transplantation after remission
Cytokine inhibitors
Dasatinib to inhibit CD3ζ downstream signal
Antibodies for depleting suppressive immune cells/cytokines
Immune checkpoint inhibitors (ICIs)
Gamma secretase inhibitors
Other strategy
Regional delivery
NK-92, Cord blood-NK, NK-iPSCs, allogeneic NK
CAR-T, chimeric antigen receptor-T; CRISPR, clustered regularly interspaced short palindromic repeats; FAP, fibroblast activation protein; iPSC, induced pluripotent stem cell; NK, natural killer; Tscm, T-stem cell memory; TRUCK, T cell redirected for universal cytokine-mediated killing.

conducted to use CAR-T at an earlier stage, even at diagnosis, with an aim to replace ASCT. CAR-T therapy has transformed MM treatment; however, limited efficacy in high-risk patients and emerging resistance remain challenges to be addressed. As the biology of the tumor can be complex and patient-specific, it is essential to understand the escape mechanisms well and to develop novel strategies. In addition, safety and success rely on timely access to CART. Global access remains a major challenge, which may be alleviated by expanding manufacturing capacity, particularly through selected academic centers alongside pharmaceutical producers.

Authorship Contributions: Concept- E.V., M.B.; Design- E.V., M.B.; Supervision- M.B.; Materials- E.V., M.B.; Data Collection or Processing- E.V., M.B.; Analysis or Interpretation- E.V., M.B.; Literature Search- E.V.; Writing- E.V.; Critical Review- M.B.

Conflict of Interest: The authors declare that they have no conflict of interest.

Funding: The authors declared that this study received no financial support.

REFERENCES

- Sonneveld P, Dimopoulos MA, Boccadoro M, et al. Daratumumab, bortezomib, lenalidomide, and dexamethasone for multiple myeloma. *N Engl J Med*. 2024;390:301-313. [\[CrossRef\]](#)
- Avet-Loiseau H. Ultra high-risk myeloma. *Hematology Am Soc Hematol Educ Program*. 2010;2010:489-493. [\[CrossRef\]](#)
- Du J, Zhuang J. Major advances in the treatment of multiple myeloma in American Society of Hematology annual meeting 2020. *Chronic Dis Transl Med*. 2021;7:220-226. [\[CrossRef\]](#)
- Lin CH, Tariq MJ, Ullah F, et al. Current novel targeted therapeutic strategies in multiple myeloma. *Int J Mol Sci*. 2024;25:6192. [\[CrossRef\]](#)
- Mikkilineni L, Kochenderfer JN. Chimeric antigen receptor t-cell therapies for multiple myeloma. *Blood*. 2017;130:2594-2602. [\[CrossRef\]](#)
- Gross G, Waks T, Eshhar Z. Expression of immunoglobulin-t-cell receptor chimeric molecules as functional receptors with antibody-type specificity. *Proc Natl Acad Sci U S A*. 1989;86:10024-10028. [\[CrossRef\]](#)
- Garfall AL, Maus MV, Hwang WT, et al. Chimeric antigen receptor t cells against CD19 for multiple myeloma. *N Engl J Med*. 2015;373:1040-1047. [\[CrossRef\]](#)
- Zhang X, Zhang H, Lan H, Wu J, Xiao Y. CAR-T cell therapy in multiple myeloma: current limitations and potential strategies. *Front Immunol*. 2023;14:1101495. [\[CrossRef\]](#)
- Wang X, Rivière I. Clinical manufacturing of CAR T cells: foundation of a promising therapy. *Mol Ther Oncolytics*. 2016;3:16015. [\[CrossRef\]](#)
- Golubovskaya V, Wu L. Different subsets of t cells, memory, effector functions, and CAR-T immunotherapy. *Cancers (Basel)*. 2016;8:36. [\[CrossRef\]](#)
- Pessach I, Nagler A. Leukapheresis for CAR-T cell production and therapy. *Transfus Apher Sci*. 2023;62:103828. [\[CrossRef\]](#)
- Qayed M, McGuirk JP, Myers GD, et al. Leukapheresis guidance and best practices for optimal chimeric antigen receptor T-cell manufacturing. *Cytotherapy*. 2022;24:869-878. [\[CrossRef\]](#)
- Stoiber S, Cadilha BL, Benmebarek MR, Lesch S, Endres S, Kobold S. Limitations in the design of chimeric antigen receptors for cancer therapy. *Cells*. 2019;8:472. [\[CrossRef\]](#)
- Bonini C, Grez M, Traversari C, et al. Safety of retroviral gene marking with a truncated NGF receptor. *Nat Med*. 2003;9:367-369. [\[CrossRef\]](#)
- Milone MC, O'Doherty U. Clinical use of lentiviral vectors. *Leukemia*. 2018;32:1529-1541. [\[CrossRef\]](#)
- Moretti A, Ponzio M, Nicolette CA, Tcherepanova IY, Biondi A, Magnani CF. The Past, Present, and future of non-viral CAR t cells. *Front Immunol*. 2022;13:867013. [\[CrossRef\]](#)
- Arcangeli S, Falcone L, Camisa B, et al. Next-generation manufacturing protocols enriching TSCM CAR t cells can overcome disease-specific t cell defects in cancer patients. *Front Immunol*. 2020;11:1217. [\[CrossRef\]](#)

18. Sadelain M, Brentjens R, Riviere I. The basic principles of chimeric antigen receptor design. *Cancer Discov*. 2013;3:388-398. [\[CrossRef\]](#)
19. Abate-Daga D, Davila ML. CAR models: next-generation CAR modifications for enhanced T-cell function. *Mol Ther Oncolytics*. 2016;3:16014. [\[CrossRef\]](#).
20. Akhoundi M, Mohammadi M, Sahraei SS, Sheykhasan M, Fayazi N. CAR T cell therapy as a promising approach in cancer immunotherapy: challenges and opportunities. *Cell Oncol (Dordr)*. 2021;44:495-523. [\[CrossRef\]](#)
21. Sheykhasan M, Ahmadih-Yazdi A, Vicidomini R, et al. CAR T therapies in multiple myeloma: unleashing the future. *Cancer Gene Ther*. 2024;31:667-686. [\[CrossRef\]](#)
22. Berdeja JG, Madduri D, Usmani SZ, et al. Ciltacabtagene autoleucel, a B-cell maturation antigen-directed chimeric antigen receptor T-cell therapy in patients with relapsed or refractory multiple myeloma (CARTITUDE-1): a phase 1b/2 open-label study. *Lancet*. 2021;398:314-324. [\[CrossRef\]](#)
23. Raju N, Berdeja J, Lin Y, et al. Anti-BCMA CAR T-Cell Therapy bb2121 in Relapsed or Refractory Multiple Myeloma. *N Engl J Med*. 2019;380:1726-1237. [\[CrossRef\]](#)
24. Grupp SA, Kalos M, Barrett D, et al. Chimeric antigen receptor-modified T cells for acute lymphoid leukemia. *N Engl J Med*. 2013;368:1509-1518. [\[CrossRef\]](#)
25. Duan D, Wang K, Wei C, et al. The BCMA-targeted fourth-generation CAR-t cells secreting IL-7 and CCL19 for therapy of refractory/recurrent multiple myeloma. *Front Immunol*. 2021;12:609421. [\[CrossRef\]](#)
26. Benmehar MR, Karches CH, Cadilha BL, Lesch S, Endres S, Kobold S. Killing mechanisms of chimeric antigen receptor (CAR) t cells. *Int J Mol Sci*. 2019;20:1283. [\[CrossRef\]](#)
27. Chen YJ, Abila B, Mostafa Kamel Y. CAR-T: What Is Next? *Cancers (Basel)*. 2023;15:663. [\[CrossRef\]](#)
28. <https://www.fda.gov/drugs/resources-information-approved-drugs/fda-approves-ciltacabtagene-autoleucel-relapsed-or-refractory-multiple-myeloma>.
29. Seckinger A, Delgado JA, Moser S, et al. Target Expression, Generation, Preclinical Activity, and Pharmacokinetics of the BCMA-T Cell Bispecific Antibody EM801 for Multiple Myeloma Treatment. *Cancer Cell*. 2017;31:396-410. [\[CrossRef\]](#)
30. Carpenter RO, Evbuomwan MO, Pittaluga S, et al. B-cell maturation antigen is a promising target for adoptive T-cell therapy of multiple myeloma. *Clin Cancer Res*. 2013;19:2048-2060. [\[CrossRef\]](#)
31. Sanchez E, Li M, Kitto A, Li J, Wang CS, Kirk DT, et al. Serum B-cell maturation antigen is elevated in multiple myeloma and correlates with disease status and survival. *Br J Haematol*. 2012;158:727-738. [\[CrossRef\]](#)
32. Ali SA, Shi V, Maric I, et al. T cells expressing an anti-B-cell maturation antigen chimeric antigen receptor cause remissions of multiple myeloma. *Blood*. 2016;128:1688-1700. [\[CrossRef\]](#)
33. Brudno JN, Maric I, Hartman SD, et al. T cells genetically modified to express an anti-b-cell maturation antigen chimeric antigen receptor cause remissions of poor-prognosis relapsed multiple myeloma. *J Clin Oncol*. 2018;36:2267-2280. [\[CrossRef\]](#)
34. Munshi NC, Anderson LD, Shah N, et al. Idecabtagene vicleucel in relapsed and refractory multiple myeloma. *N Engl J Med*. 2021;384:705-716. [\[CrossRef\]](#)
35. Rodriguez-Otero P, Ailawadhi S, Arnulf B, et al. Plain language summary of the KarMMa-3 study of ide-cel or standard of care regimens in people with relapsed or refractory multiple myeloma. *Future Oncol*. 2024;20:1221-1235. [\[CrossRef\]](#)
36. Ailawadhi S, Arnulf B, Patel K, et al. Ide-cel vs standard regimens in triple-class-exposed relapsed and refractory multiple myeloma: updated KarMMa-3 analyses. *Blood*. 2024;144:2389-2401. [\[CrossRef\]](#)
37. Usmani SZ, Berdeja JG, Truppel-Hartmann A, et al. KarMMa-4: Idecabtagene vicleucel (ide-cel, bb2121), a BCMA-directed CAR T-cell therapy in high-risk newly diagnosed multiple myeloma. *J Clin Oncol*. 2021;39(15 Suppl):TPS8053. [\[CrossRef\]](#)
38. Hillengass J, Cohen AD, Delforge M, et al. MM-183 CARTITUDE-2 Cohort a: updated clinical data and biological correlative analyses of ciltacabtagene autoleucel (cilta-cel) in lenalidomide-refractory patients with progressive multiple myeloma (MM) after 1-3 prior lines of therapy (LOT). *Clin Lymphoma Myeloma Leuk*. 2022;22(Suppl 2):411. [\[CrossRef\]](#)
39. San-Miguel J, Dhakal B, Yong K, et al. Cilta-cel or standard care in lenalidomide-refractory multiple myeloma. *N Engl J Med*. 2023;389:335-347. [\[CrossRef\]](#)
40. Hillengass J, Cohen AD, Agha M, et al. The phase 2 cartitude-2 trial: updated efficacy and safety of ciltacabtagene autoleucel in patients with multiple myeloma and 1-3 prior lines of therapy (cohort a) and with early relapse after first line treatment (cohort b). *Transplant Cell Ther*. 2024;30(Suppl):36-37. [\[CrossRef\]](#)
41. Dytfeld D, Dhakal B, Agha M, et al. Bortezomib, lenalidomide and dexamethasone (VRd) followed by ciltacabtagene autoleucel versus vrd followed by lenalidomide and dexamethasone (Rd) maintenance in patients with newly diagnosed multiple myeloma not intended for transplant: a randomized, phase 3 study (CARTITUDE-5). *Blood*. 2021;138(Suppl 1):1835. [\[CrossRef\]](#)
42. Xu J, Wang BY, Yu SH, et al. Long-term remission and survival in patients with relapsed or refractory multiple myeloma after treatment with LCAR-B38M CAR T cells: 5-year follow-up of the LEGEND-2 trial. *J Hematol Oncol*. 2024;17(1):23. [\[CrossRef\]](#)
43. Mailankody S, Matous JV, Liedtke M, et al. Universal updated phase 1 data highlights role of allogeneic anti-BCMA ALLO-715 therapy for relapsed/refractory multiple myeloma. *Blood*. 2022;140(Suppl 1):4620-4622. [\[CrossRef\]](#)
44. Ali SA, Shi V, Maric I, et al. T cells expressing an anti-B-cell maturation antigen chimeric antigen receptor cause remissions of multiple myeloma. *Blood*. 2016;128:1688-1700. [\[CrossRef\]](#)
45. Cornell RF, Bishop MR, Kumar S, et al. A phase 1, multicenter study evaluating the safety and efficacy of KITE-585, an autologous anti-BCMA CAR T-cell therapy, in patients with relapsed/refractory multiple myeloma. *Am J Cancer Res*. 2021;11:3285-3293. [\[CrossRef\]](#)
46. Costello CL, Cohen AD, Patel KK, et al. Phase 1/2 study of the safety and response of P-BCMA-101 CAR-t cells in patients with relapsed/refractory (r/r) multiple myeloma (MM) (PRIME) with novel therapeutic strategies. *Blood*. 2020;136(Suppl 1):29-30. [\[CrossRef\]](#)
47. Mei H, Li C, Jiang H, et al. A bispecific CAR-T cell therapy targeting BCMA and CD38 in relapsed or refractory multiple myeloma. *J Hematol Oncol*. 2021;14(1):161. [\[CrossRef\]](#)
48. Sperling AS, Derman BA, Nikiforow S, et al. Updated phase I study results of PHE885, a T-Charge manufactured BCMA-directed CAR-T cell therapy, for patients (pts) with r/r multiple myeloma (RRMM). *J Clin Oncol*. 2023;41(16 Suppl):8004. [\[CrossRef\]](#)
49. Mailankody S, Devlin SM, Landa J, et al. GPRC5D-Targeted CAR T Cells for Myeloma. *N Engl J Med*. 2022;387:1196-1206. [\[CrossRef\]](#)
50. Tang Y, Yin H, Zhao X, et al. High efficacy and safety of CD38 and BCMA bispecific CAR-T in relapsed or refractory multiple myeloma. *J Exp Clin Cancer Res*. 2022;41:2. [\[CrossRef\]](#)
51. Lin Y, Martin TG, Usmani SZ, et al. CARTITUDE-1 final results: Phase 1b/2 study of ciltacabtagene autoleucel in heavily pretreated patients with relapsed/refractory multiple myeloma. *J Clin Oncol*. 2023;41(16 Suppl):8009. [\[CrossRef\]](#)
52. Mailankody S, Ghosh A, Staehr M, et al. Clinical responses and pharmacokinetics of MCAH171, a human-derived bcma targeted CAR t cell therapy in relapsed/refractory multiple myeloma: final results of a phase I clinical trial. *Blood*. 2018;132(Suppl 1):959. [\[CrossRef\]](#)
53. Freeman CL, Dhakal B, Kaur G, et al. Phase 2 registrational study of anitocabtagene autoleucel for the treatment of patients with relapsed and/or refractory multiple myeloma: preliminary results from the IMMagine-1 trial. *Blood*. 2024;144(Suppl 1):1031. [\[CrossRef\]](#)
54. Lee L, Lim WC, Galas-Filipowicz D, et al. Limited efficacy of APRIL CAR in patients with multiple myeloma indicate challenges in the use of natural ligands for CAR T-cell therapy. *J Immunother Cancer*. 2023;11:e006699. [\[CrossRef\]](#)
55. Zhang H, Liu M, Xiao X, et al. A combination of humanized anti-BCMA and murine anti-CD38 CAR-T cell therapy in patients with relapsed or refractory multiple myeloma. *Leuk Lymphoma*. 2022;63:1418-1427. [\[CrossRef\]](#)
56. Raju NS, Shah N, Jagannath S, et al. Updated Clinical and Correlative Results from the Phase I CRB-402 Study of the BCMA-Targeted CAR T Cell Therapy bb21217 in Patients with Relapsed and Refractory Multiple Myeloma. *Blood*. 2021;138(Suppl 1):548. [\[CrossRef\]](#)
57. Mailankody S, Jakubowiak AJ, Htut M, et al. Orvacabtagene autoleucel (orva-cel), a B-cell maturation antigen (BCMA)-directed CAR T cell therapy for patients (pts) with relapsed/refractory multiple myeloma (RRMM): update of the phase 1/2 EVOLVE study (NCT03430011). *J Clin Oncol*. 2020;38(15 Suppl):8504. [\[CrossRef\]](#)
58. Baumeister SH, Murad J, Werner L, et al. Phase I Trial of Autologous CAR T Cells Targeting NKG2D Ligands in Patients with AML/MDS and Multiple Myeloma. *Cancer Immunol Res*. 2019;7:100-112. [\[CrossRef\]](#)
59. Yan Z, Cao J, Cheng H, et al. A combination of humanised anti-CD19 and anti-BCMA CAR T cells in patients with relapsed or refractory multiple myeloma: a single-arm, phase 2 trial. *Lancet Haematol*. 2019;6:521-529. [\[CrossRef\]](#)
60. Li C, Wang D, Song Y, Huang H, Li J, Chen B, et al. P867: CT103A, a novel fully human bcma-targeting car-t cells in patients with relapsed/refractory multiple myeloma: updated results of phase 1b/2 study (fumanba-1). *Hemasphere*. 2023;7(Suppl 3):e45392b8. [\[CrossRef\]](#)

61. Wang Y, Cao J, Gu W, et al. Long-term follow-up of combination of b-cell maturation antigen and CD19 chimeric antigen receptor t cells in multiple Myeloma. *J Clin Oncol*. 2022;40:2246-2256. [\[CrossRef\]](#)
62. Swan D, Madduri D, Hocking J. CAR-T cell therapy in Multiple Myeloma: current status and future challenges. *Blood Cancer J*. 2024;14:206. [\[CrossRef\]](#)
63. Du J, Fu W, Jiang H, et al. P869: Updated Results Of A Phase I, Open-Label Study Of Bcma/Cd19 Dual-Targeting Fastcar-T Gc012f For Patients With Relapsed/Refractory Multiple Myeloma (RRMM). *Hemasphere*. 2023;7(Suppl 3):1631-1632. [\[CrossRef\]](#)
64. Jie J, Hao S, Jiang S, et al. Phase 1 Trial of the Safety and Efficacy of Fully Human Anti-Bcma CAR T Cells in Relapsed/Refractory Multiple Myeloma. *Blood*. 2019;134(Suppl 1):4435. [\[CrossRef\]](#)
65. Guo CC, Lu Y, Tang KJ, et al. [Construction of CD138-targeted chimeric antigen receptor-modified T cells and their effect in multiple myeloma therapy]. *Zhonghua Xue Ye Xue Za Zhi*. 2024;45:436-444. [\[CrossRef\]](#)
66. Li C, Xu J, Luo W, et al. Bispecific CS1-BCMA CAR-T cells are clinically active in relapsed or refractory multiple myeloma. *Leukemia*. 2024;38:149-159. [\[CrossRef\]](#)
67. de Carvalho F, Vettore AL, Inaoka RJ, et al. Evaluation of LAGE-1 and NY-ESO-1 expression in multiple myeloma patients to explore possible benefits of their homology for immunotherapy. *Cancer Immun*. 2011;11:1. [\[CrossRef\]](#)
68. Wang QJ, Yu Z, Hanada KI, et al. Preclinical evaluation of chimeric antigen receptors targeting CD70-expressing cancers. *Clin Cancer Res*. 2017;23:2267-2276. [\[CrossRef\]](#)
69. Larson RC, Kann MC, Graham C, et al. Anti-TACI single and dual-targeting CAR T cells overcome BCMA antigen loss in multiple myeloma. *Nat Commun*. 2023;14:7509. [\[CrossRef\]](#)
70. Rejeski K, Jain MD, Smith EL. Mechanisms of resistance and treatment of relapse after CAR t-cell therapy for large b-cell lymphoma and multiple myeloma. *Transplant Cell Ther*. 2023;29:418-428. [\[CrossRef\]](#)
71. Yakoub-Agha I, Chabannon C, Bader P, et al. Management of adults and children undergoing chimeric antigen receptor T-cell therapy: best practice recommendations of the European Society for Blood and Marrow Transplantation (EBMT) and the Joint Accreditation Committee of ISCT and EBMT (JACIE). *Haematologica*. 2020;105:297-316. [\[CrossRef\]](#)
72. Cowan AJ, Tuazon SA, Portuguese AJ, Green DJ. Chimeric antigen receptor t cells for multiple myeloma: the journey so far-and the road ahead. *Cancer J*. 2021;27:112-118. [\[CrossRef\]](#)
73. Samur MK, Fulciniti M, Aktas Samur A, et al. Biallelic loss of BCMA as a resistance mechanism to CAR T cell therapy in a patient with multiple myeloma. *Nat Commun*. 2021;12:868. [\[CrossRef\]](#)
74. Hamieh M, Dobrin A, Cabriolu A, et al. CAR T cell trogocytosis and cooperative killing regulate tumour antigen escape. *Nature*. 2019;568:112-116. [\[CrossRef\]](#)
75. Wittibschlager V, Bacher U, Seipel K, et al. CAR T-Cell persistence correlates with improved outcome in patients with b-cell lymphoma. *Int J Mol Sci*. 2023;24:5688. [\[CrossRef\]](#)
76. Huang R, Wang X, Zhang X. Unity brings strength: Combination of CAR-T cell therapy and HSCT. *Cancer Lett*. 2022;549:215721. [\[CrossRef\]](#)
77. Dhodapkar MV, Krasovsky J, Osman K, Geller MD. Vigorous premalignancy-specific effector T cell response in the bone marrow of patients with monoclonal gammopathy. *J Exp Med*. 2003;198:1753-1757. [\[CrossRef\]](#)
78. Lam PY, Souza-Fonseca-Guimaraes F. Highlight of 2023: Unlocking the therapeutic potential of natural killer cells-advances in adaptive functions, cellular engineering and immunotherapy. *Immunol Cell Biol*. 2024;102:444-447. [\[CrossRef\]](#)
79. Reyes KR, Liu YC, Huang CY, et al. clinical outcomes and salvage therapies in patients with relapsed/refractory multiple myeloma following progression on BCMA-Targeted CAR-t therapy. *Blood*. 2022;140(Suppl 1):617-619. [\[CrossRef\]](#)
80. Van Oekelen O, Nath K, Mouhieddine TH, et al. Interventions and outcomes of patients with multiple myeloma receiving salvage therapy after BCMA-directed CAR T therapy. *Blood*. 2023;141:756-765. [\[CrossRef\]](#)
81. Cohen AD, Mateos MV, Cohen YC, et al. Efficacy and safety of cilta-cel in patients with progressive multiple myeloma after exposure to other BCMA-targeting agents. *Blood*. 2023;141:219-230. [\[CrossRef\]](#)
82. Chen W, Fu C, Fang B, et al. Phase II study of fully human BCMA-targeting CAR-t cells (zevorcabtagene autoleucl) in patients with relapsed/refractory multiple myeloma. *Blood*. 2022;140(Suppl 1):4564-4565. [\[CrossRef\]](#)
83. Frigault MJ, Bishop MR, Rosenblatt J, et al. Phase 1 study of CART-ddBCMA for the treatment of subjects with relapsed and refractory multiple myeloma. *Blood Adv*. 2023;7:768-777. [\[CrossRef\]](#)
84. Ravi G, Richard S, Kumar S, et al. Phase 1 clinical trial of B-Cell Maturation Antigen (BCMA) NEX-T® Chimeric Antigen Receptor (CAR) T cell therapy CC-98633/BMS-986354 in participants with triple-class exposed multiple myeloma. *Leukemia*. 2025;39:816-826. [\[CrossRef\]](#)
85. Sperling AS, Nikiforow S, Derman B, et al. P1446: Phase I study data update of Phe885, a fully human bcma-directed car-t cell therapy manufactured using the t-chargetm platform for patients with relapsed/refractory (R/R) multiple myeloma (MM). *Hemasphere*. 2022;6:1329-1330. [\[CrossRef\]](#)
86. Kagoya Y, Tanaka S, Guo T, et al. A novel chimeric antigen receptor containing a JAK-STAT signaling domain mediates superior antitumor effects. *Nat Med*. 2018;24:352-359. [\[CrossRef\]](#)
87. Garfall AL, Stadtmauer EA, Hwang WT, et al. Anti-CD19 CAR T cells with high-dose melphalan and autologous stem cell transplantation for refractory multiple myeloma. *JCI Insight*. 2019;4:e127684. [\[CrossRef\]](#) Erratum for: *JCI Insight*. 2018;3:120505. [\[CrossRef\]](#)
88. Davila ML, Bouhassira DC, Park JH, et al. Chimeric antigen receptors for the adoptive T cell therapy of hematologic malignancies. *Int J Hematol*. 2014;99:361-371. [\[CrossRef\]](#)
89. Kawano Y, Fujiwara S, Wada N, et al. Multiple myeloma cells expressing low levels of CD138 have an immature phenotype and reduced sensitivity to lenalidomide. *Int J Oncol*. 2012;41:876-884. [\[CrossRef\]](#)
90. Ramani VC, Sanderson RD. Chemotherapy stimulates syndecan-1 shedding: a potentially negative effect of treatment that may promote tumor relapse. *Matrix Biology*. 2014;35:215-222. [\[CrossRef\]](#)
91. Veillette A, Guo H. CS1, a SLAM family receptor involved in immune regulation, is a therapeutic target in multiple myeloma. *Crit Rev Oncol Hematol*. 2013;88:168-177. [\[CrossRef\]](#)
92. Tokarew N, Ogonek J, Endres S, von Bergwelt-Baildon M, Kobold S. Teaching an old dog new tricks: next-generation CAR T cells. *Br J Cancer*. 2019;120:26-37. [\[CrossRef\]](#)
93. Moreaux J, Cremer FW, Reme T, et al. The level of TACI gene expression in myeloma cells is associated with a signature of microenvironment dependence versus a plasmablastic signature. *Blood*. 2005;106:1021-1030. [\[CrossRef\]](#)
94. Schubert PC, Jakka G, Jensen SM, et al. Effector memory and central memory NY-ESO-1-specific re-directed T cells for treatment of multiple myeloma. *Gene Ther*. 2013;20:386-395. [\[CrossRef\]](#)
95. Rapoport AP, Stadtmauer EA, Binder-Scholl GK, et al. NY-ESO-1-specific TCR-engineered T cells mediate sustained antigen-specific antitumor effects in myeloma. *Nat Med*. 2015;21:914-921. [\[CrossRef\]](#)
96. Ramos CA, Savoldo B, Torrano V, et al. Clinical responses with T lymphocytes targeting malignancy-associated κ light chains. *J Clin Invest*. 2016;126:2588-2596. [\[CrossRef\]](#)
97. Yan L, Qu S, Shang J, Shi X, et al. Sequential CD19 and BCMA-specific CAR T-cell treatment elicits sustained remission of relapsed and/or refractory myeloma. *Cancer Med*. 2021;10:563-574. [\[CrossRef\]](#)