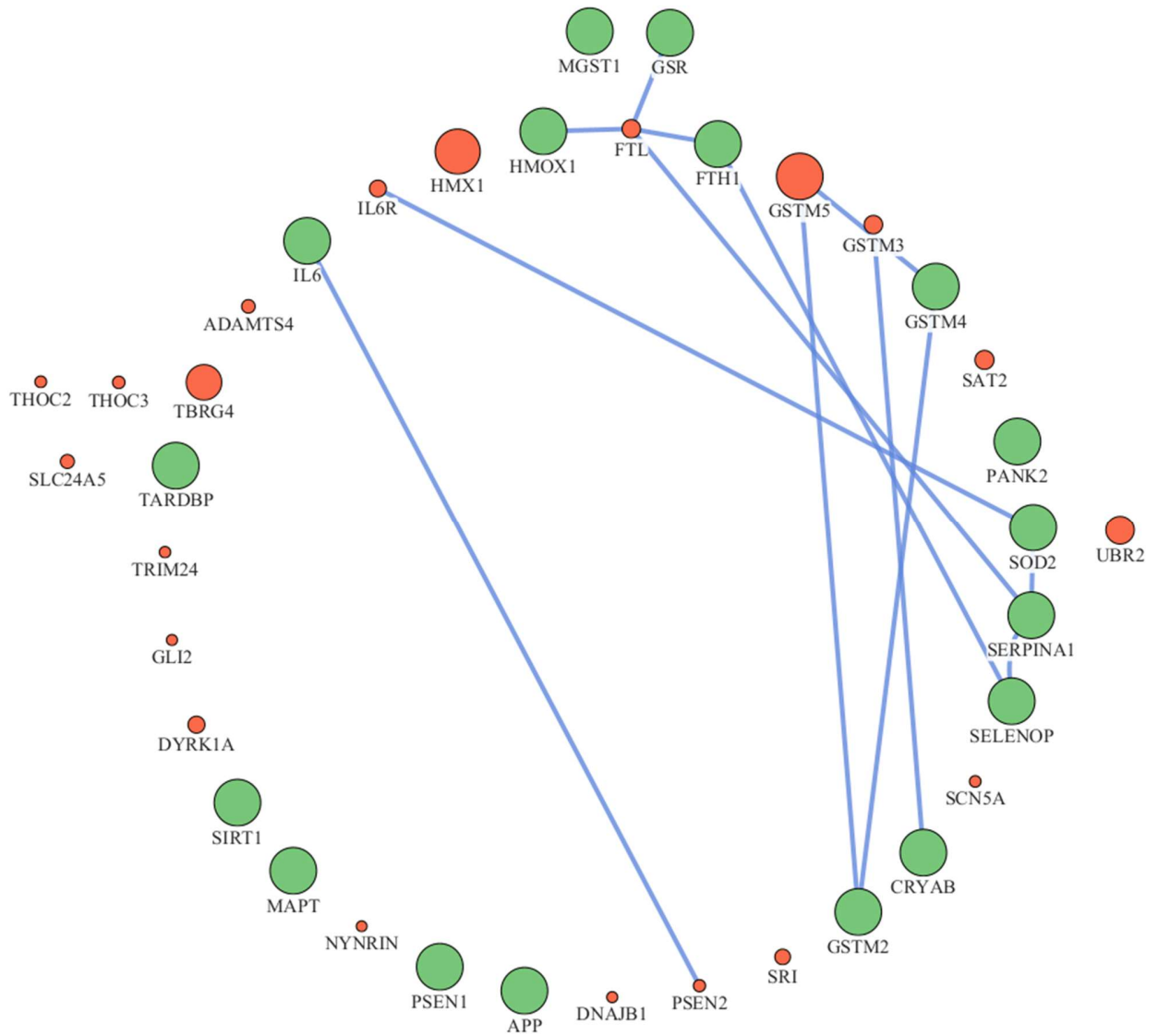
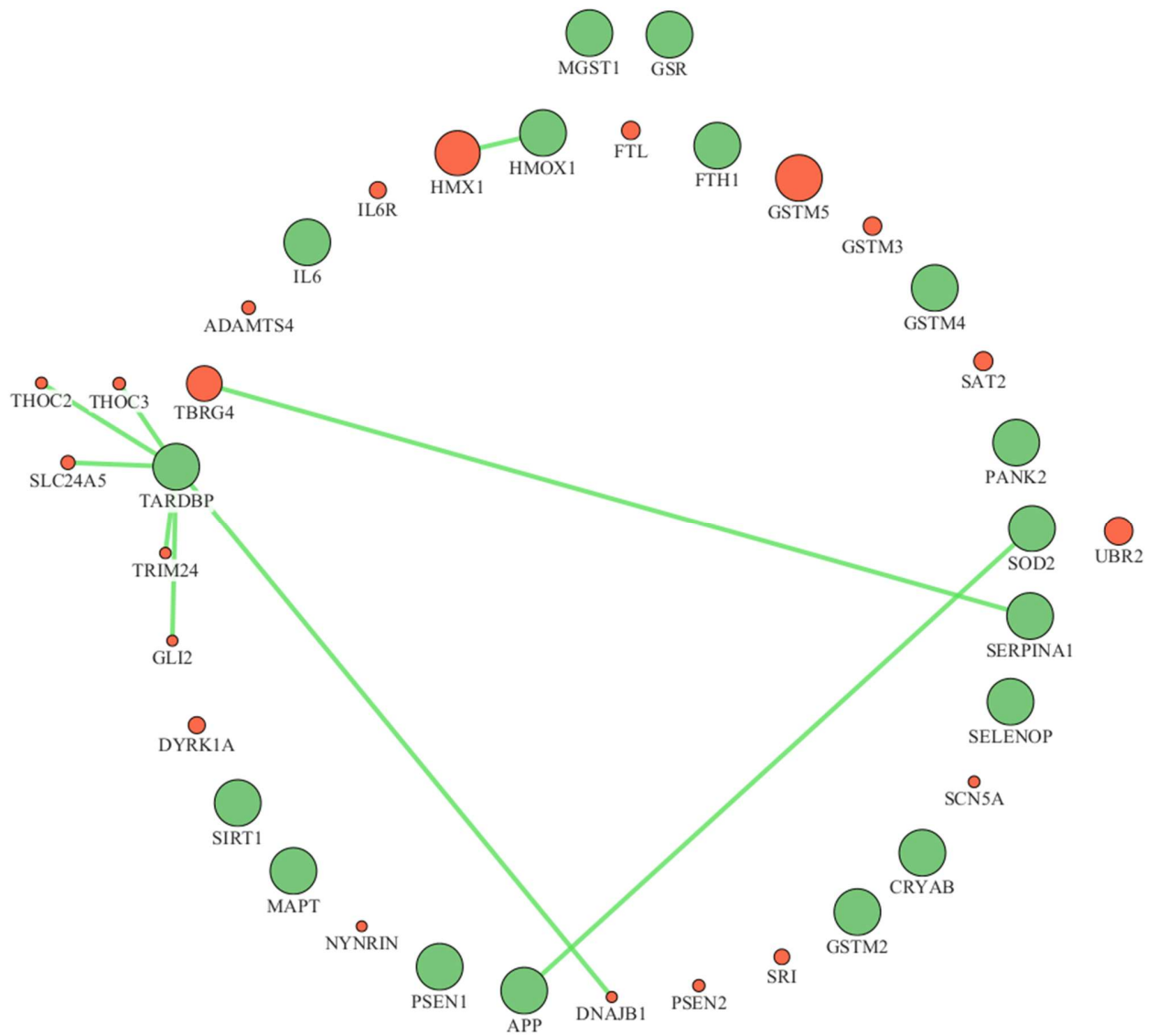


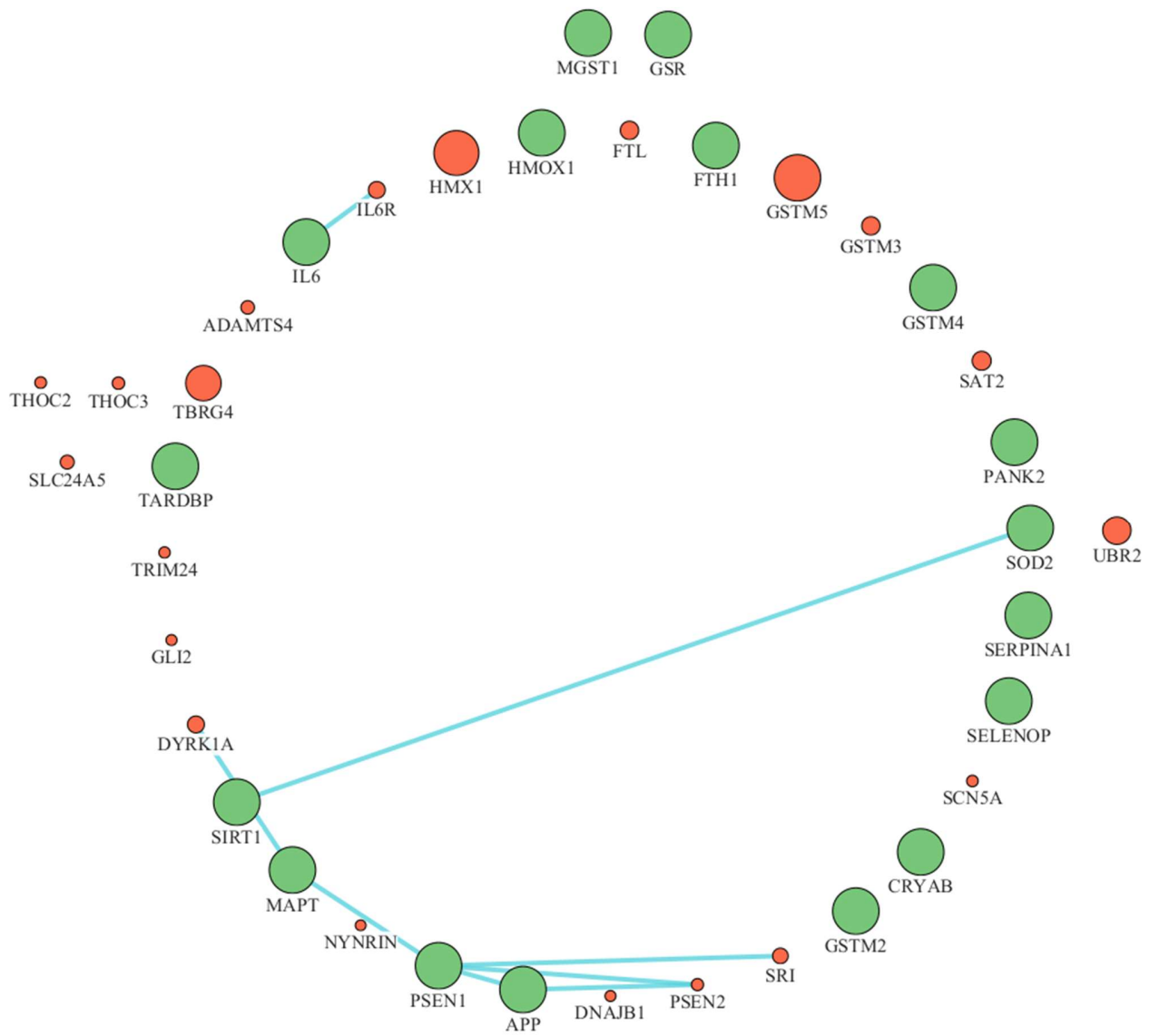
Supplementary Figure 1. Separated interactions affected by Zn exposure and linked with neurodegenerative diseases development - Co-expression.



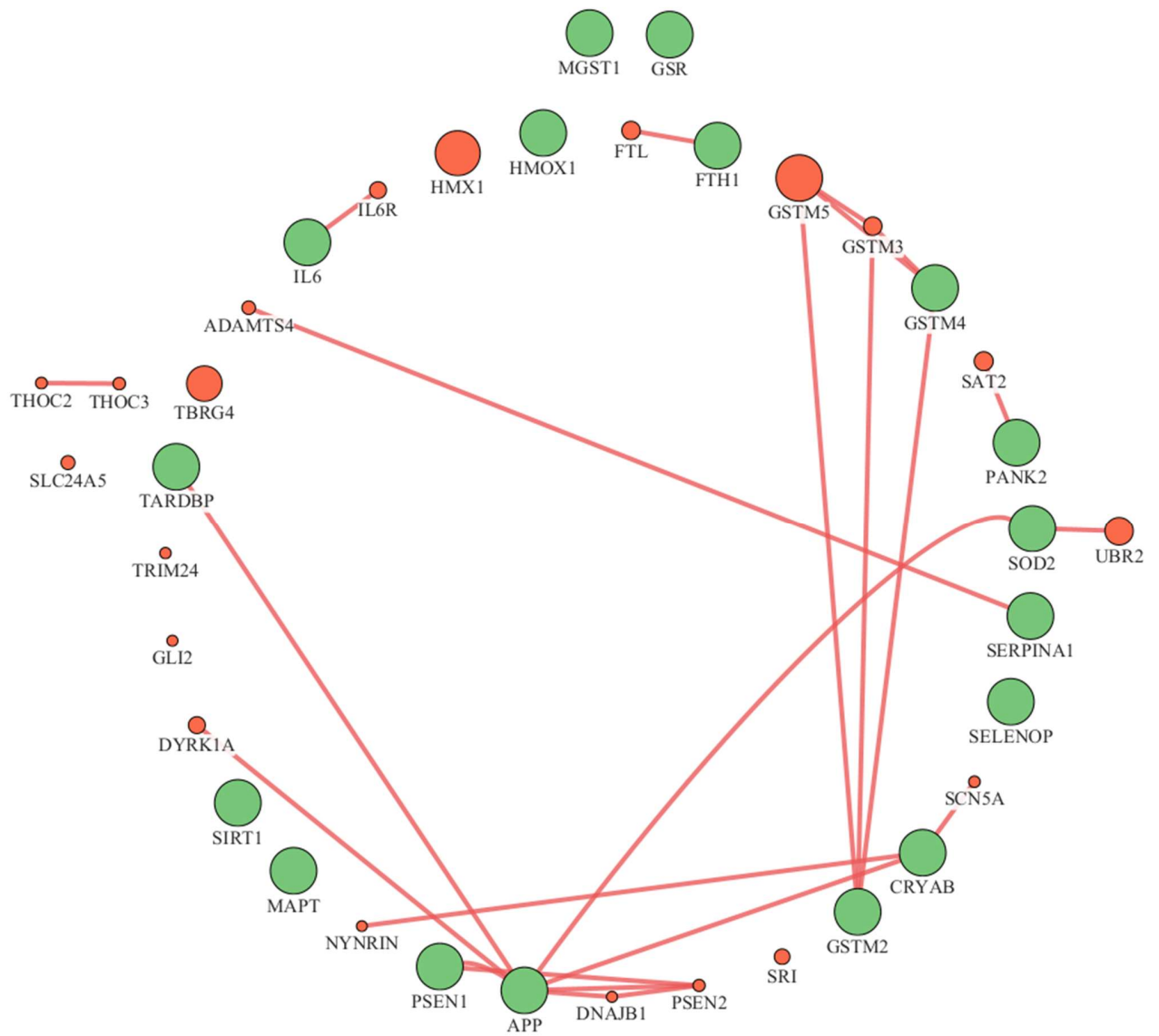
Supplementary Figure 2. Separated interactions affected by Zn exposure and linked with neurodegenerative diseases development - Co-localization.



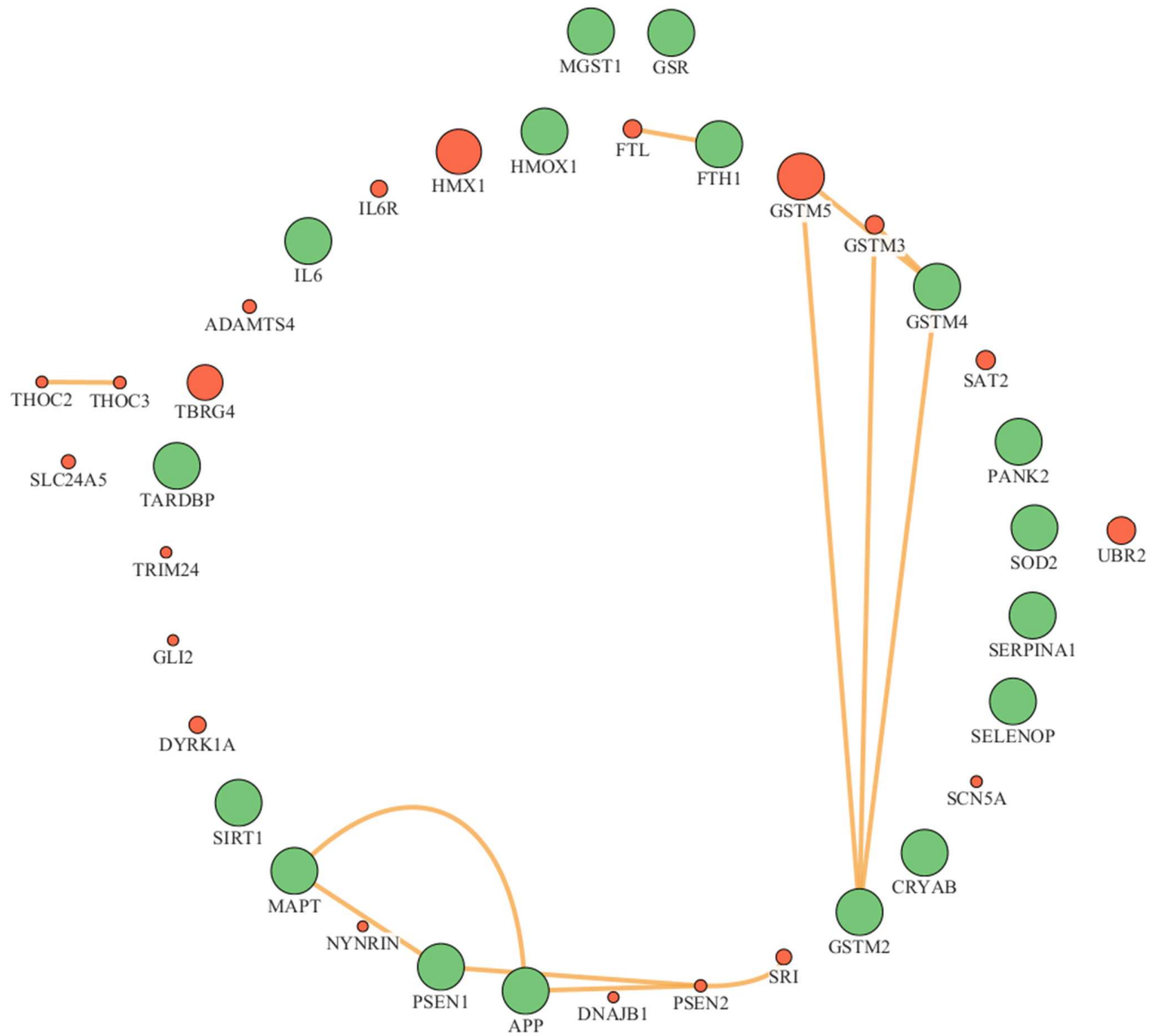
Supplementary Figure 3. Separated interactions affected by Zn exposure and linked with neurodegenerative diseases development - Genetic interactions.



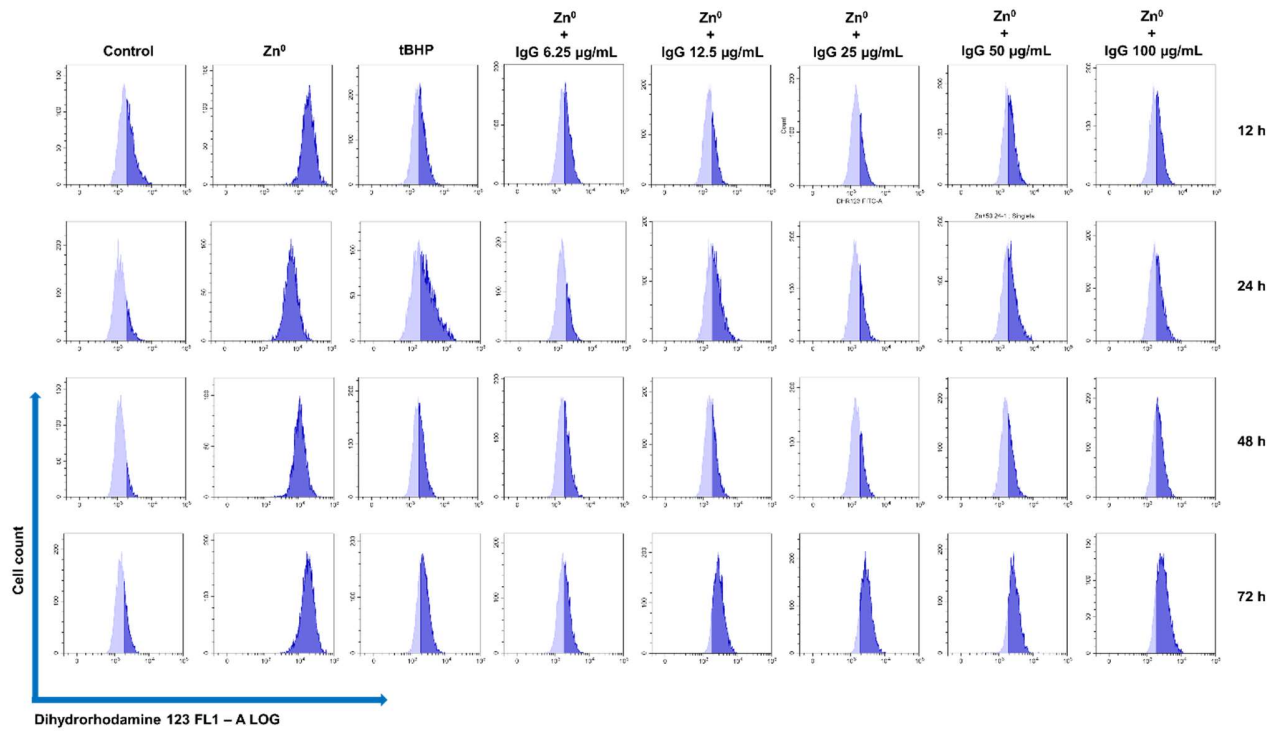
Supplementary Figure 4. Separated interactions affected by Zn exposure and linked with neurodegenerative diseases development - Pathway.



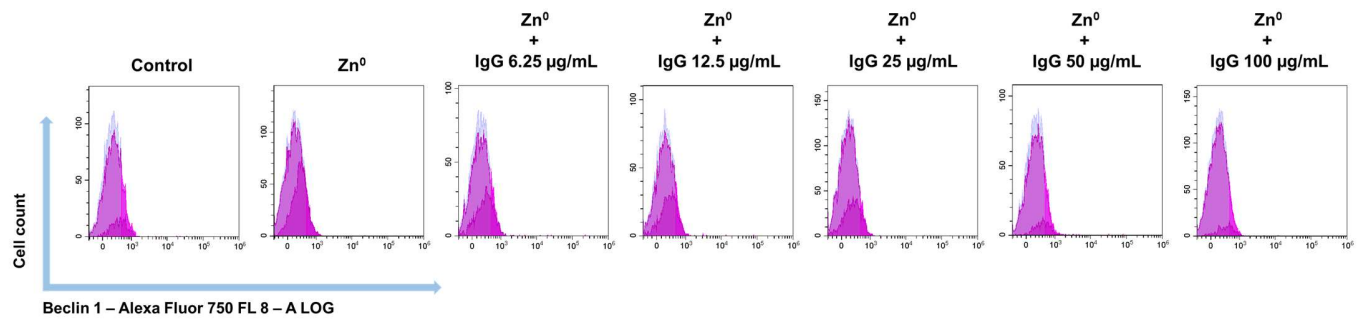
Supplementary Figure 5. Separated interactions affected by Zn exposure and linked with neurodegenerative diseases development - Physical interactions.



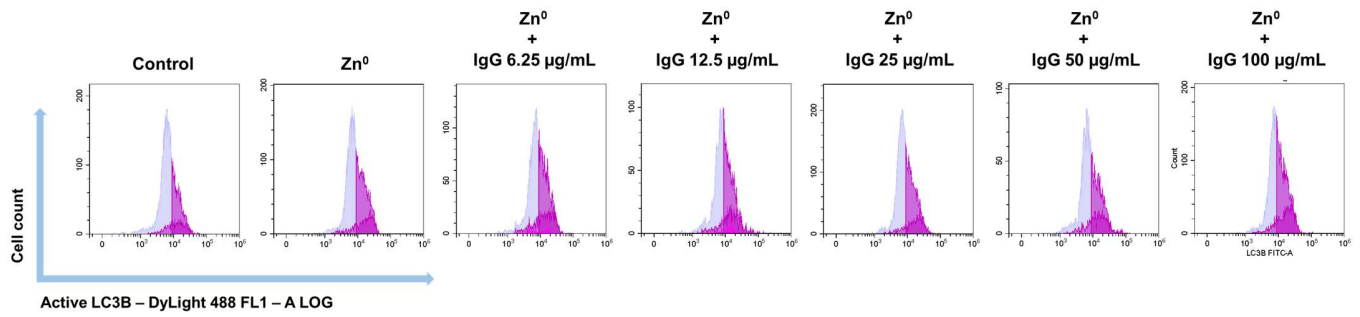
Supplementary Figure 6. Separated interactions affected by Zn exposure and linked with neurodegenerative diseases development - Predicted interactions.



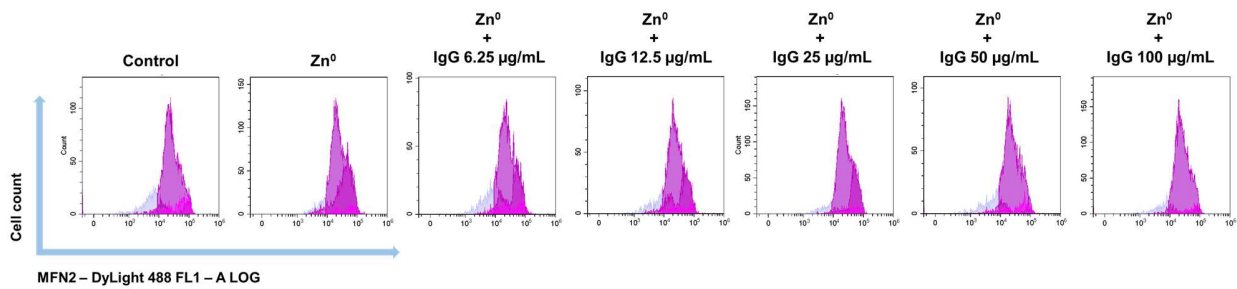
Supplementary Figure 7. Representative flow cytometry histograms regarding DHR123 analysis.



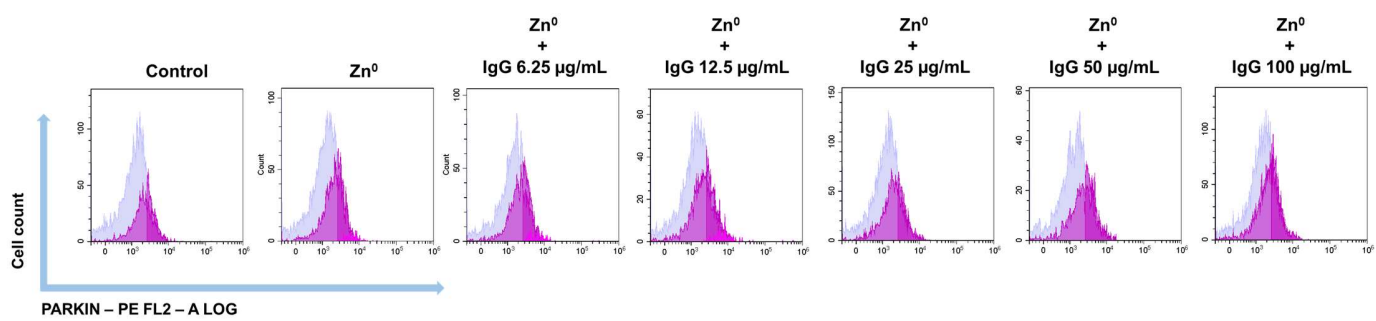
Supplementary Figure 8. Representative flow cytometry histograms regarding Beclin-1 protein levels.



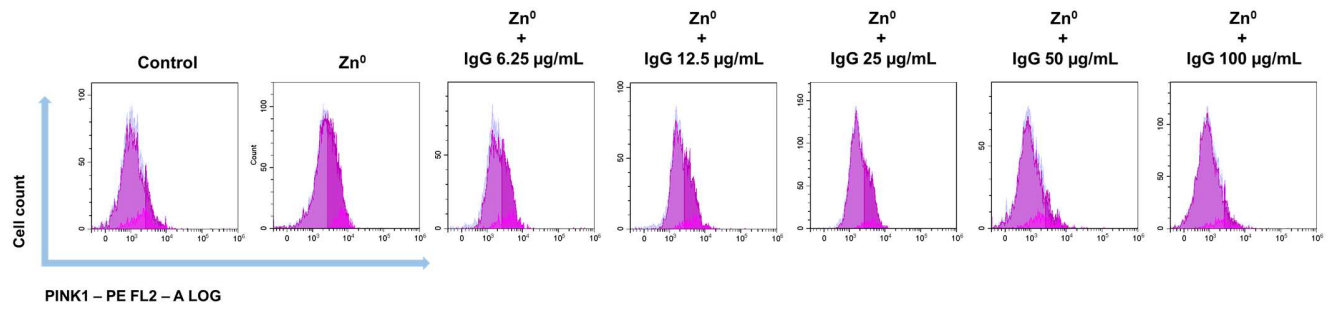
Supplementary Figure 9. Representative flow cytometry histograms regarding active LC3B protein levels.



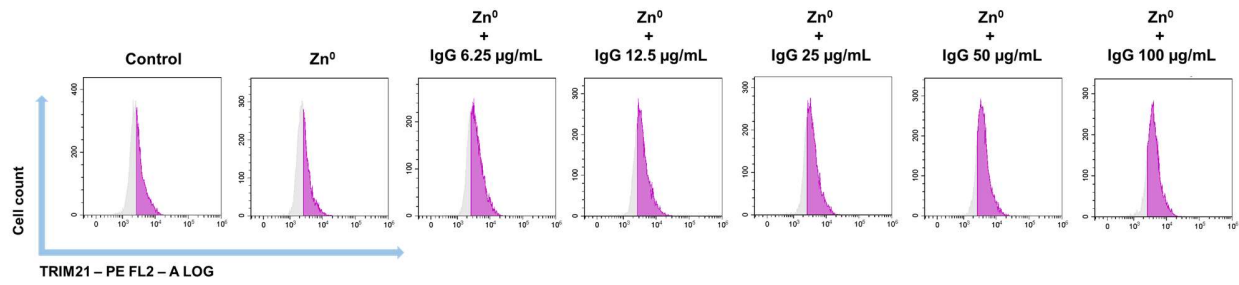
Supplementary Figure 10. Representative flow cytometry histograms regarding MFN2 protein levels.



Supplementary Figure 11. Representative flow cytometry histograms regarding Parkin protein levels.



Supplementary Figure 12. Representative flow cytometry histograms regarding PINK1 protein levels.



Supplementary Figure 13. Representative flow cytometry histograms regarding TRIM21 protein levels.